

Solutions for Youth Employment (S4YE)

Governance Structure

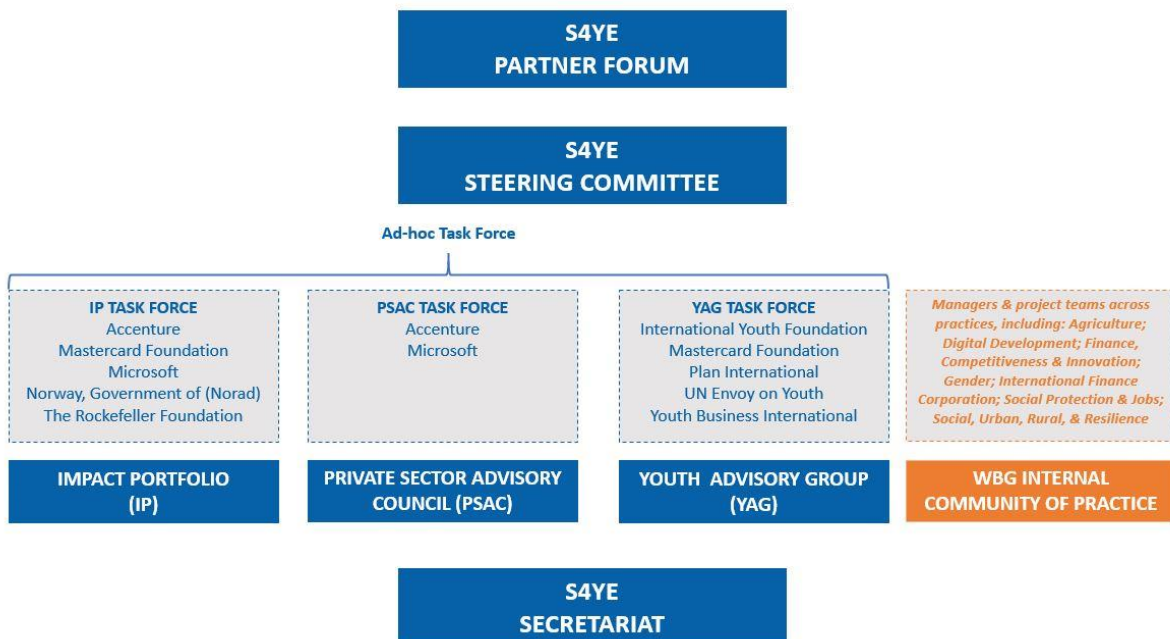
About Solutions for Youth Employment (S4YE)

Solutions for Youth Employment (S4YE) is a multi-stakeholder coalition that aims to provide leadership and resources for catalytic action to increase the number of young people engaged in productive work. The S4YE coalition’s members include the *World Bank Group, Accenture, The Rockefeller Foundation, Mastercard Foundation, Microsoft, Plan International, International Youth Foundation (IYF), Youth Business International (YBI), RAND Corporation, the International Labour Organization (ILO), the Governments of Norway and Germany, and the UN Envoy for Youth.*¹ The S4YE Secretariat is housed in the Jobs Group within the Social Protection and Jobs Global Practice (SPJ GP) at the World Bank Group (WBG).

Governance Structure

S4YE’s governance and membership structure reflects an ecosystem that comprises of the following: S4YE Partner Forum; S4YE Steering Committee; Impact Portfolio; Private Sector Advisory Council (PSAC); Youth Advisory Group (YAG); WBG Internal Community of Practice; ad-hoc Task Forces; and the S4YE Secretariat. This ecosystem is illustrated in Figure 1 below.

Figure 1: S4YE Governance Structure



¹ For a full list of S4YE partners, please visit: <https://www.s4ye.org/partners>.

Governance Roles and Responsibilities

<p>S4YE PARTNER FORUM</p>	<p>Broad forum for S4YE Coalition Members. Includes all S4YE partners, including: civil society organizations, bilateral agencies and donors, governments, private sector companies, technical experts and youth.</p>
<p>S4YE STEERING COMMITTEE</p>	<p>The Steering Committee (SC) provides high-level strategic guidance on the focus of the S4YE Secretariat’s work program. The SC will include all members of the previous Board of Directors, plus any additional partners providing financial or in-kind support.</p>
<p>IMPACT PORTFOLIO (IP)</p>	<p>A group of innovative projects developing cutting-edge solutions for youth employment. IP members participate in peer-to-peer learning and collaborate with WBG teams and other S4YE partners on events, knowledge products and projects.</p>
<p>PRIVATE SECTOR ADVISORY COUNCIL (PSAC)</p>	<p>Senior level representatives from a select group of private sector companies. The PSAC will advise S4YE’s work plan and strategy, collaborate with S4YE partners and WB teams on operations and knowledge products, and support S4YE events and flagship initiatives.</p>
<p>YOUTH ADVISORY GROUP (YAG)</p>	<p>A group of young, socially-minded entrepreneurs. The YAG will provide input into S4YE’s work plan, participate in S4YE and World Bank learning events, and collaborate with S4YE on knowledge products. The YAG will also serve as a resource for IP members, WBG staff and PSAC members to draw upon for youth insights.</p>
<p>WBG INTERNAL COMMUNITY OF PRACTICE</p>	<p>A network of WBG staff, including senior management and teams leading youth employment operations, research and advisory activities across different units and practices. The WBG internal community of practice will engage with the Steering Committee, IP, PSAC and YAG to identify opportunities for collaboration.</p>
<p>AD-HOC TASK FORCE</p>	<p>3-6 members of the Steering Committee will be called upon periodically to form ad-hoc task forces. Each task force will provide advice on designing and implementing work plans for IP, PSAC and YAG, or other elements of the S4YE work plan from time-to-time.</p>
<p>S4YE SECRETARIAT</p>	<p>Responsible for day-to-day operations implementing S4YE’s strategy, annual work plan and budget. Headquartered at the World Bank Group in Washington D.C., the Secretariat is led by the S4YE Coalition Manager.</p>